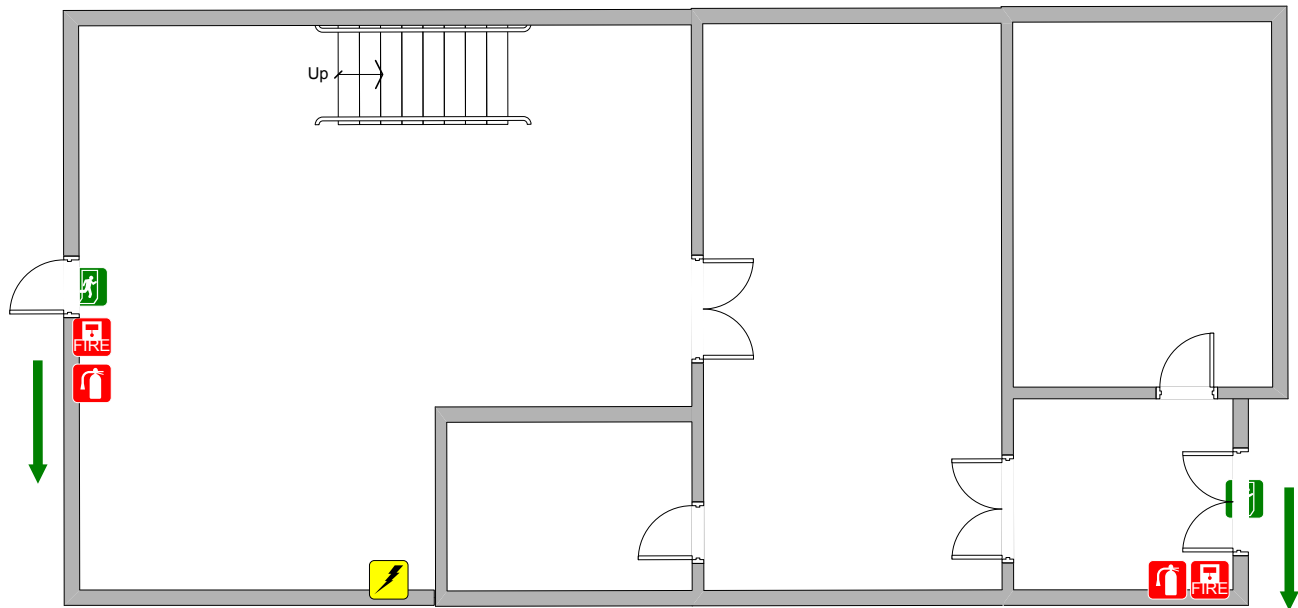


# THE PRISON CELL TECHNICAL DETAILS



NOT TO SCALE

UNIT SIZE		
	Length	52' 9" / 16.13 m
	Width	24' 9" / 7.6 m
	Height (to runway beams)	14' 9" / 4.5 m
	Height (to lighting grid)	13' 1" / 4 m
	Area	1,319 sq ft / 122.59 sq m

<b>ELECTRICAL SUPPLY</b>	64 amp supply to single socket. <i>Production will need to supply own distribution box for lighting/ power</i>
--------------------------	---

<b>UNIT EXTRACTION</b>	No
------------------------	----

<b>WASHROOMS</b>	External WC cabin in front of Stage 5
------------------	---------------------------------------

<b>LOADING ACCESS</b>	Double door restricted to approx. 900mm width by external cage
-----------------------	--

<b>FLOOR TYPE</b>	Wooden (set) & Concrete
-------------------	-------------------------

<b>HEATING</b>	5 x high level convector heaters
----------------	----------------------------------

<b>WATER SUPPLY</b>	No
---------------------	----

<b>TELECOMS</b>	None
-----------------	------

<b>FIRE PROTECTION</b>	Smoke detectors	<b>FIRE EXTINGUISHERS</b>	CO2	2	Foam	2
------------------------	-----------------	---------------------------	-----	---	------	---

<b>COSHH STORAGE</b>	No flammable substances permitted on set
----------------------	--

<b>OTHER INFORMATION</b>	Ceiling contains Asbestos. <b>DO NOT FIX TO THE CEILING.</b> Staircase is decorative only, not load bearing
--------------------------	--