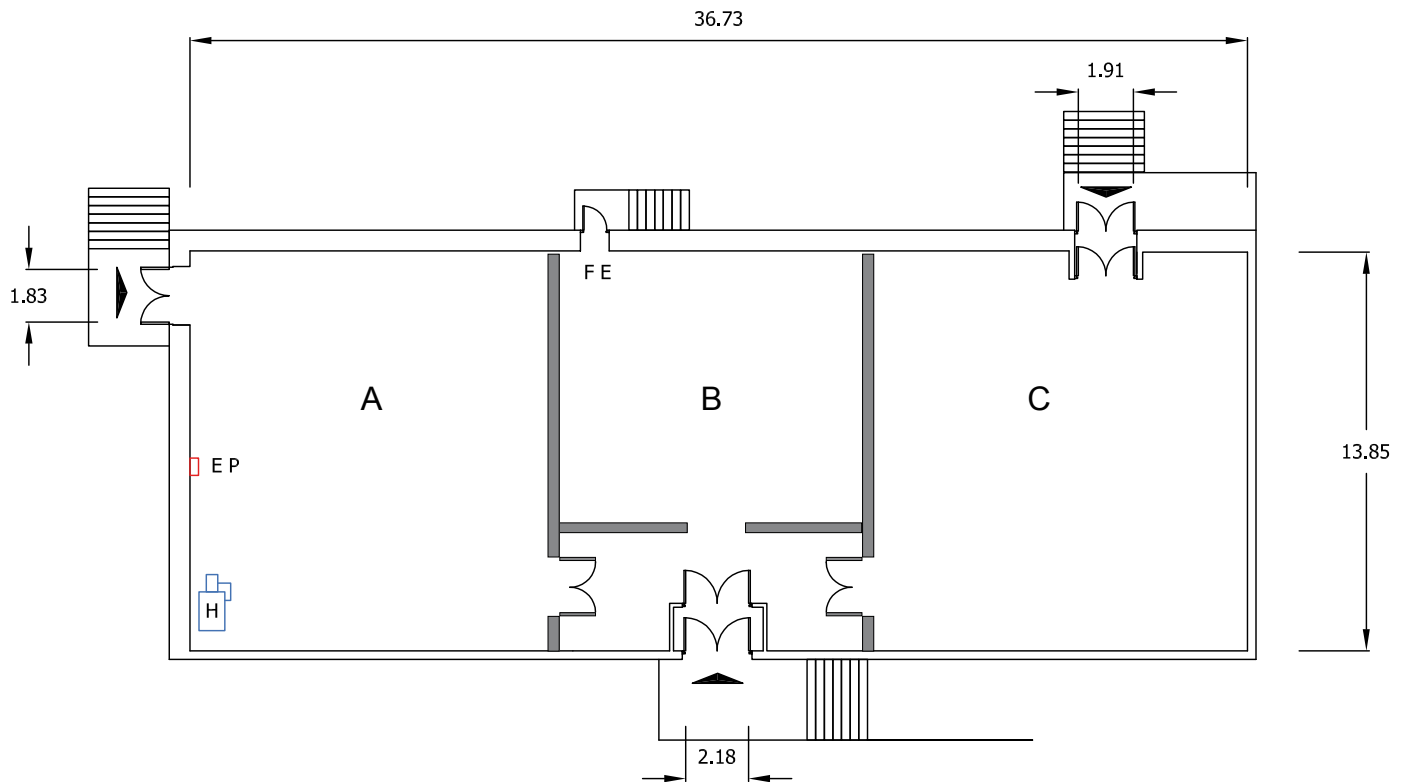


## Rehearsal Room C



### KEY

	MAIN ENTRANCE
	FIRE EXIT
	ELECTRIC PANEL
	WATER SUPPLY OR SINK
	HEATER

### REHEARSAL ROOM DIMENSIONS

REHEARSAL ROOM C	LENGTH	WIDTH	HEIGHT	AREA
Feet/inches	43'3"	45'7"	21'11"	1,970 sq ft
Metres	13.20m	13.85m	6.70m	183 sq m

Dimensions are not to be scaled from this drawing. Production must verify all dimensions before commencing any works on this stage.

# Rehearsal Room C

## Technical details

REHEARSAL ROOM SIZE	Length	43' 3"	13.20 m
	Width	45' 7"	13.85 m
	Height (to runway beams)	21' 11"	6.70 m
	Area	1970 sq ft	183sq m
ELECTRICAL SUPPLY	Number of 63 Amp sockets	N/A	
	Number of 13 Amp sockets	4 double	
BEAM LOADING	None permitted		
WALL ANCHOR POINTS	N/A		
LOADING ACCESS	External dock doors: 2m wide Rehearsal Room doors: Double Doors via Lobby		
FLOOR TYPE	Harlequin Allegro cushioned floor with Standfast vinyl with top surface		
FLOOR LOADING	None permitted		
HEATING	High level radiant gas heaters	2	
WATER SUPPLY	No		
TELECOMS	No		
FIRE PROTECTION	Sprinkler activation temperature	141C	
	Smoke detectors	No	
FIRE EXTINGUISHERS	H2O	0	
	CO2	1	
	Foam	1	
RED LIGHT AND BELL	No		
EXTRACTION	No		

