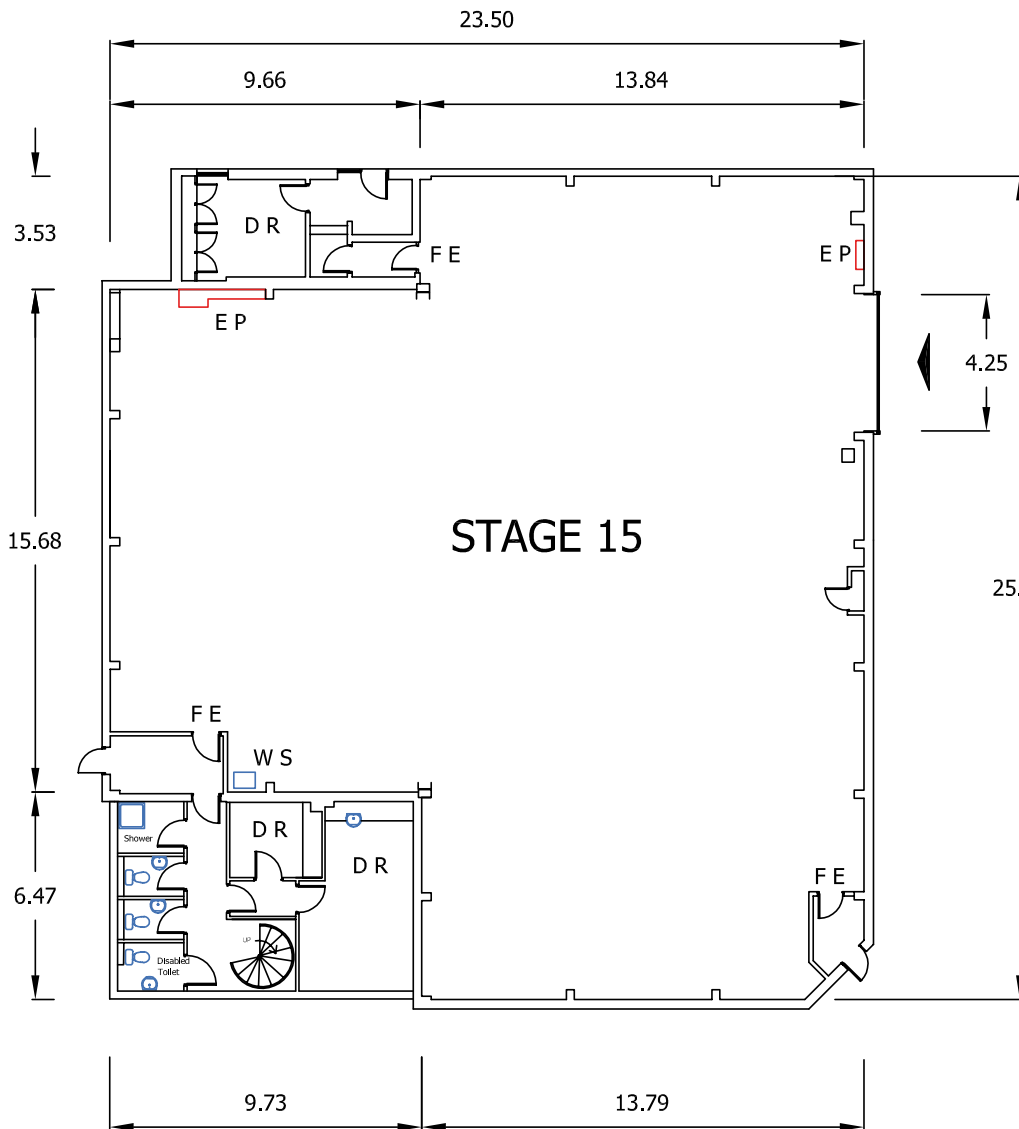



## Stage 15



### KEY

	MAIN ENTRANCE
<b>FE</b>	FIRE EXIT
<b>EP</b>	ELECTRIC PANEL
<b>WS</b>	WATER SUPPLY
<b>H</b>	HEATER
<b>DR</b>	DRESSING ROOM
<b>M</b>	MALE TOILET
<b>F</b>	FEMALE TOILET
<b>D</b>	DISABLED TOILET
<b>O</b>	OFFICE
<b>SR</b>	STORE ROOM

### STAGE DIMENSIONS

STAGE 15	LENGTH	WIDTH	HEIGHT	AREA
Feet/inches	84'3"	77'1"	27'6"	5,320 sq ft
Metres	25.67m	23.50m	8.37m	494.21 sq m

Dimensions are not to be scaled from this drawing. Production must verify all dimensions before commencing any works on this stage.

# Stage 15

## Technical details

STAGE SIZE	Length	84' 3"	25.67 m
	Width	77' 1"	23.50 m
	Height (to runway beams)	27' 6"	8.37 m
	Area	5,320 sq. ft	494.21 sq. m
ELECTRICAL SUPPLY	Maximum electrical load	AC full load Amps 400 3-phase <i>Connection via sequential NRG Powerlock</i>	
	Number of 63 Amp sockets	2	
	Number of 16 Amp sockets	1	
	Number of 13 Amp sockets	20	
BEAM LOADING	500kgs every 2m centre. 12 x beams.		
WALL ANCHOR POINTS	N/A		
LOADING ACCESS	Roller shutter		
FLOOR TYPE	Wooden		
FLOOR LOADING	N/A		
HEATING	Heated air blower	Yes	
WATER ON STAGE	Yes		
TELECOMS	No		
FIRE PROTECTION	Smoke detectors	Yes	
	Sprinklers	Yes	
FIRE EXTINGUISHERS	H2O	3	
	CO2	3	
	Foam	1	
RED LIGHT AND BELL	No		
EXTRACTION	Yes		

